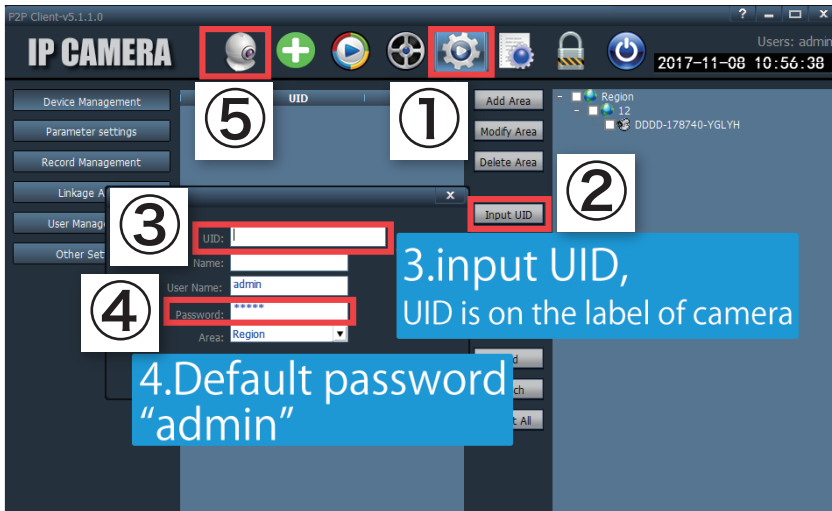



PC Software

Download GENBOLT CAM for Windows/MacBook from genbolt.com/blog/downloads.

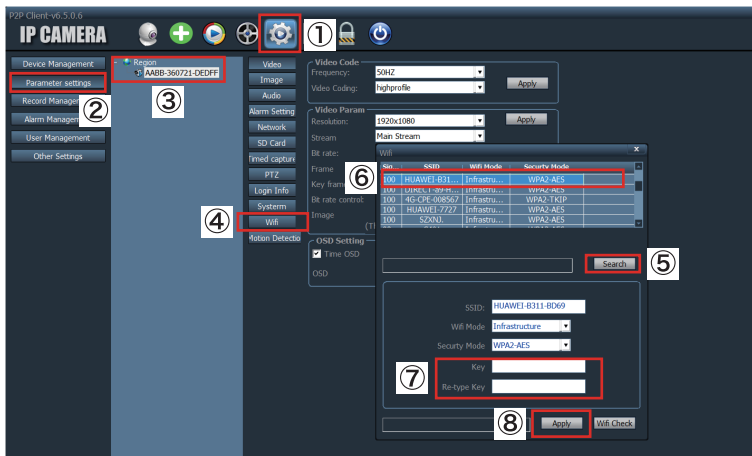


**1. Enter detailed settings, account: admin,
Password: no need to fill in.**



- 2: ① Click the "Settings" button.
- ② Click "Input UID".
- ③ Input UID manually. (UID is on the label of camera)
- ④ Enter the default password "admin". (If you have changed your password, please enter the changed password.)
- ⑤ Click  to view. If offline, right click on the camera "connect device".

Switch into Wi-Fi Connection



① After completing the wired connection, click the "Settings" button.

② Click "Parameter settings".

③ Select the camera UID.

④ Click "Wifi".

⑤ Click "Search".

⑥ Select your wifi.

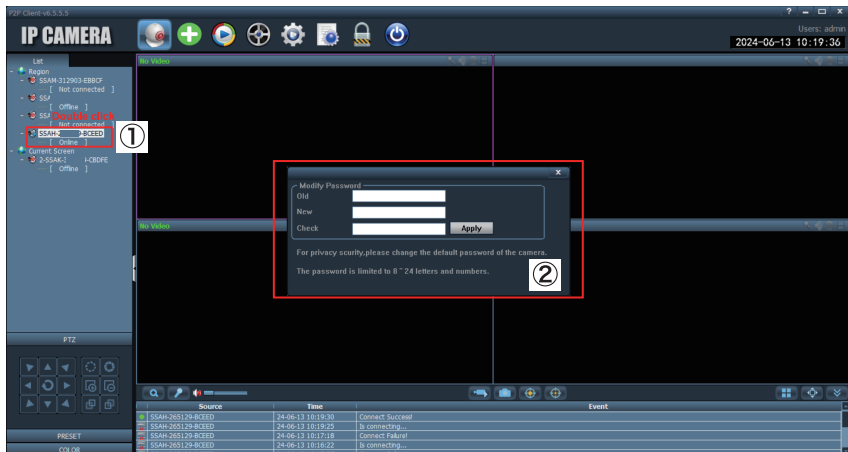
⑦ Input wifi password.

⑧ Apply.

* Wait it about 1 min, when camera online unplug LAN cable and it have connected with wifi.

* If finished Wi-Fi switch in app, no need to setting again in pc.

If No Image After Adding

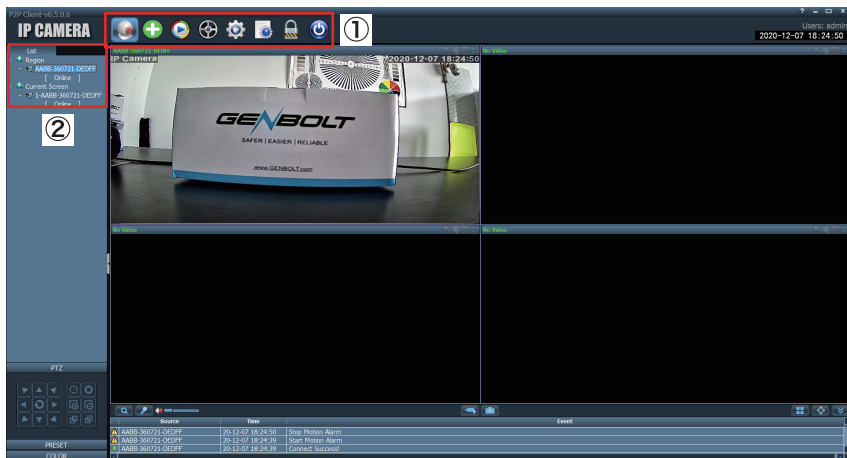


① Double click the UID.









② To protect your privacy, please change the camera's default password "admin" to a new password.

The new password is limited to 8 letters and numbers. After setting the new password, you can view the live image.

Software Main Interface



① Menu of main functions:

-  Preview
-  Add device automatically
-  Play the local recordings
-  Play the TF card recordings
-  Detailed settings
-  Logs
-  Cancellation
-  Log out

② Camera added

[AABB-360721-DEDF] -- Connected

camera UID. (Note: If show camera

offline please right click camera and

click connect device; If not show up camera image,

please drag the camera UID under Region select to

right box).

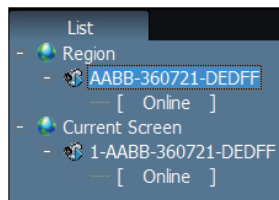


Image Quality Selection

Right-click the UID of the camera and select "Quality:Max" for best video performance. Switch to "Quality:Min" for smoother play.

P2P Client-v6.5.1.9

IP CAMERA

Users: admin 2021-11-19 11:31:06

SSAC-003475-1CBEA

2021-11-18 22:31:07

Quality:Max

Quality:Min

Auto Adjust Device

Full Display Device

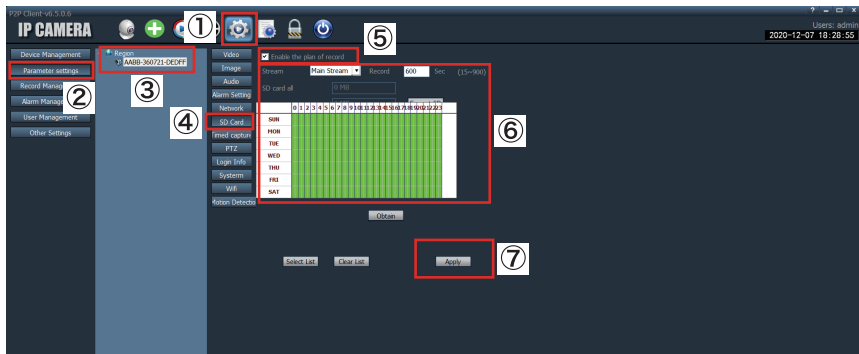
PTZ

PRESET

COLOR

Source	Time	Event
SSAC-BEA	21-11-19 11:28:34	Connect Success!
SSAC-BEA	21-11-19 11:28:08	Lost connect
SSAC-BEA	21-11-19 11:26:42	Connect Success!
SSAC-BEA	21-11-19 11:26:27	Lost connect
SSAC-RFA	21-11-19 11:25:00	Connect Success!

Save Recordings (to TF card)



① Click the "Settings" button.

② Click "Parameter settings".

③ Select the camera UID.

④ Click "SD Card".

⑤ Click "Enable the plan of record".

⑥ Set the duration of recording, select the schedule you want to record.

⑦ Click "Apply", and the setting up will be finished.

Save Recordings (to Hard Disk)

The screenshot shows the 'IP CAMERA' software interface. The sidebar on the left contains the following menu items: Device Management, Parameter settings, Record Management (highlighted with a red box and a circled '2'), Alarm Management, User Management, and Other Settings. The main area displays a calendar for the week of 2020-12-07 to 2020-12-13, with a green grid indicating recording status. Below the calendar is a table showing disk usage for various drives. The settings panel at the bottom is titled 'General Record Settings' and includes the following options:

- General Record Length: 5 Mps
- Alarm Duration Time: 10 Sec
- No hard disk space coverage: Yes
- maining disk begins recovery control: 10 GB
- Record Format: 204/265

A red box highlights the 'Alarm Duration Time' setting, and a red arrow points to it with the text 'Alarm Recording Time Settings:5-60 Secs'. The 'Save' button is located at the bottom of the settings panel.

Disk	Total size(GB)	Available size...	Path
C:\	99,999	38,215	C:\Record\
D:\	99,000	85,726	D:\Record\
E:\	7,484	3,542	E:\Record\
F:\	100,000	94,600	F:\Record\
G:\	85,000	81,870	G:\Record\
H:\	90,754	90,804	H:\Record\

- ① Click the "Settings" button.
- ② Click "Record Management".
- ③ Select the camera UID.
- ④ Click "SD Card".

IP Address Change



- ① Click the "Settings" button.
- ② Click Parameter settings.
- ③ Please select the camera UID you want to change.